

Network Video Recorder



4 CHANNEL
QUICK INSTALLATION GUIDE V.1.5

Contents

Purpose	3
Package Contents	3
System Overview (Front & Rear)	4
LEDs and Buttons	5
Hard Drive Installations	7
Connect to the NVR	8
Set up Password	12
Add a Camera	13
Recording Configurations	15

4 Channel Network Video Recorder

Purpose

This document provides information for installing the 4CH Basic Network Video Recorder on your network. The information included in this document should be sufficient for users to quickly setup the device and start the live video monitoring. Users should also be able to perform basic troubleshooting with information provided in this document. For all other aspects of using this product, please consult the user's manual available on the CD

Package Contents

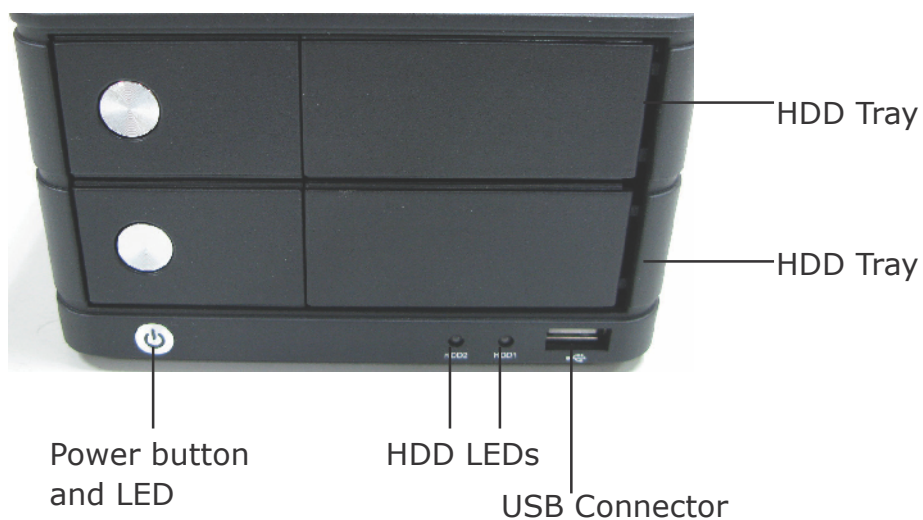
- **4CH Basic Network Video Recorder**
- **Power Adapter: Input 100-240V, Output +12V/4A**
- **Ethernet cable**
- **CD with Adobe Acrobat Reader/Quick Installation Guide/User's Manual/NVR Search Utility**



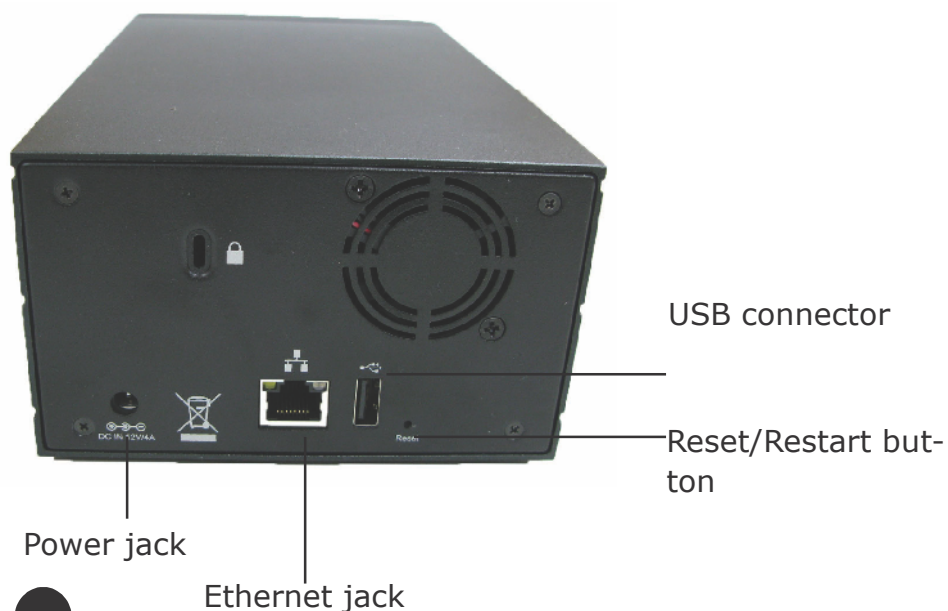
4 Channel Network Video Recorder

System Overview

(Front)



(Rear)



4 Channel Network Video Recorder

Hard Drive Installations

1. Push the silver button to release the HDD tray



2. Pull out the HDD tray



3. Place the HDD on the tray and secure the HDD with the screws at the bottom (as illustrated)



4. Push the tray back in the unit and press down the black bar to secure the tray



Connect to the NVR

There are various ways you can connect to the NVR and below are the suggested methods for different network setup:

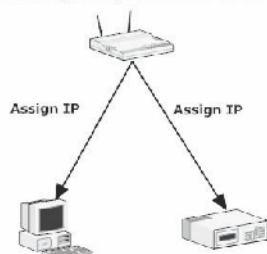
- The NVR is placed in a network with a DHCP server: Connect to the NVR by using **"NVR Search" Utility**
- The NVR is placed in a network without DHCP server (or you are connecting to it directly): **Access the NVR with its default IP**

Use NVR Device Search Utility

If the NVR is placed in a corporate network or a local area network where a DHCP server is already presented, run the "NVR Device Search" utility from a computer that is on the same network and locate the NVR with its IP address that is assigned by the top-level DHCP server.

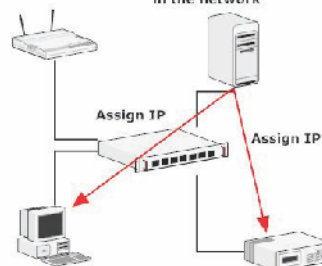
1.

Network gateway as the DHCP server

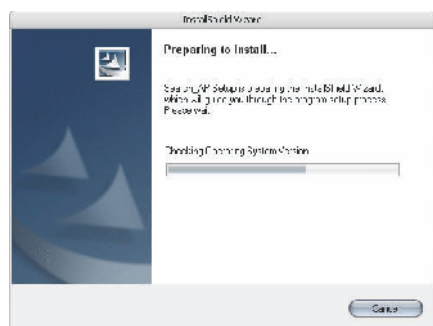


2.

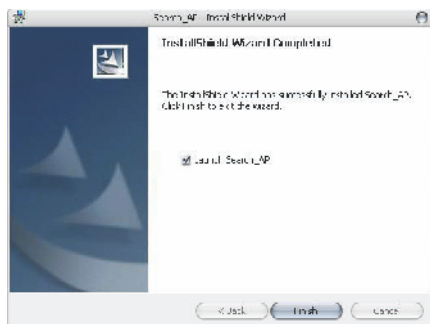
A separate DHCP server in the network



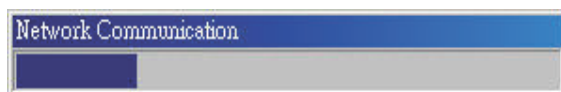
To begin, launch the "NVR Search" utility from the CD and proceed with the installation:



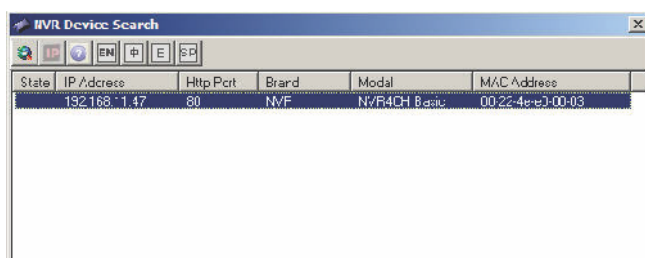
Once the installation is complete, check the "Launch the Search AP" option and click "Finish":



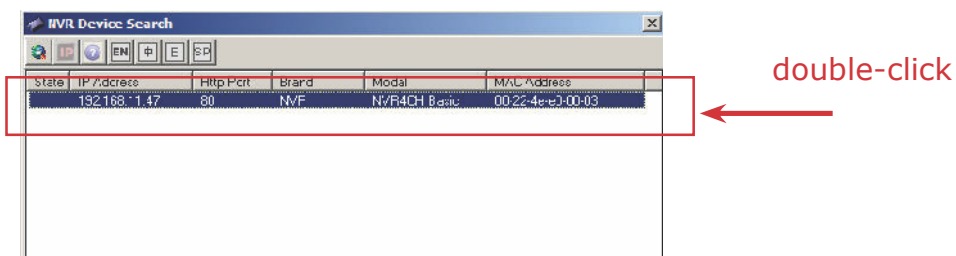
The search should start automatically and its status should be displayed:



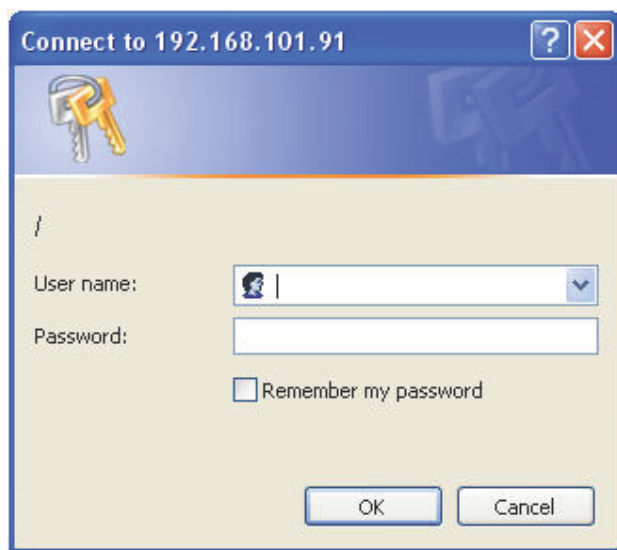
The NVR should be located and its IP address should be displayed:



Double-click on an NVR and the search program should automatically access the NVR's web administration page from your default browser

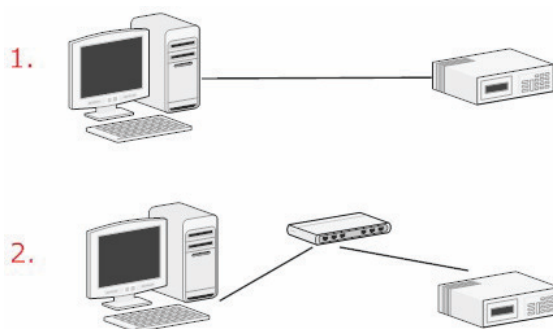


You should be prompted for the the NVR's username and password. Enter its default username "admin" and password "admin" and then click "OK" to enter the system

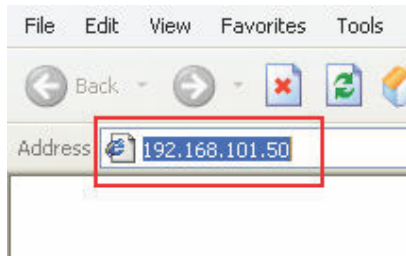


Access the NVR with its default IP address

The NVR comes with a pre-configured static IP "**192.168.101.50**". However, it is only used when there is no DHCP server presented in the network. The NVR will turn on its DHCP server function and act as the DHCP server in the network. To connect to the NVR, use a PC that is on the same network over a switch or hub, or connect the PC directly to the NVR using a crossover CAT5 Ethernet cable.



The PC that is connected directly to the NVR (or within the same local area network) should receive an IP from the NVR. Simply access the NVR from your web browser with its IP address



Again, you should be prompted for the username and password. Enter its default username "**admin**" and password "**admin**" and then click "OK" to enter the system



Set up Password

The default login username and password is admin/admin. To change the password of the admin account, go to "Setup" --> "System Configurations" --> "User Account", click on the "admin" account in the account list then press the "edit" button to change its password. Finally, click "Apply" to save the change.

SETUP

System Configurations

- Network Settings
- Time and Date
- User Account**
- Group Privilege
- Disk Setup

Camera Configurations

Setup

- 1 System Configuration
- 2 Time and Date
- 3 User Account
- 4 Channel Configuration
- 5 Event Configuration
- 6 Recording Configuration
- 7 System Options

User Account Setting

User Name	Group	Description
admin	admin	
quest	quest	sc
joser	supervisor	eng
hunt	opera	tc
view1	VIEWER	japan

Add User

User Name
 Password
 Confirm Password
 Company (Optional)
 Telephone (Optional)
 Address (Optional)
 E-mail (Optional)
 Group
 Language: English (Optional)
 Add

Main View | E-MAP Monitor | **Setup** | Channel Status
 System Time: May 07, 2009 10:24:34
 User: admin

User Name	Group	Description
admin	admin	
quest	quest	sc
joser	supervisor	eng
hunt	opera	tc
view1	VIEWER	japan

Edit

Remove

4 Channel Network Video Recorder

Add a Camera

Automatic Search:

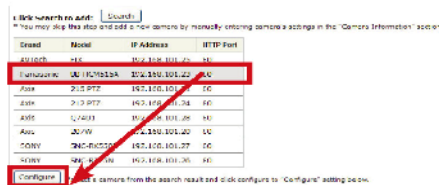
1. Click the "Search" button to perform the camera search. You should be prompted to install Active Control component in order for the search to function properly. Go ahead and click "Install"



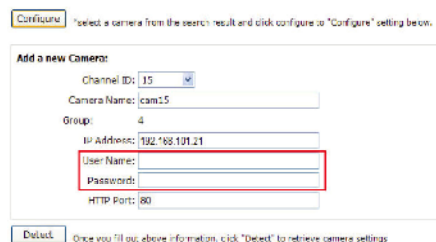
2. After that, the search should begin and its status should be displayed:



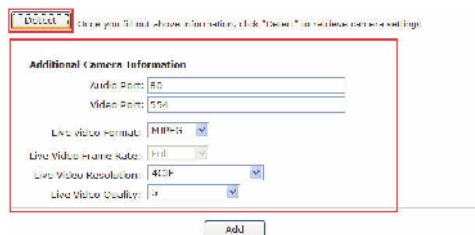
3. Found cameras should be listed and simply select a camera from the list and press "Configure"



4. Its corresponding information should be displayed in the "Camera Information" section. Enter its username and password and select the channel ID and name the camera.



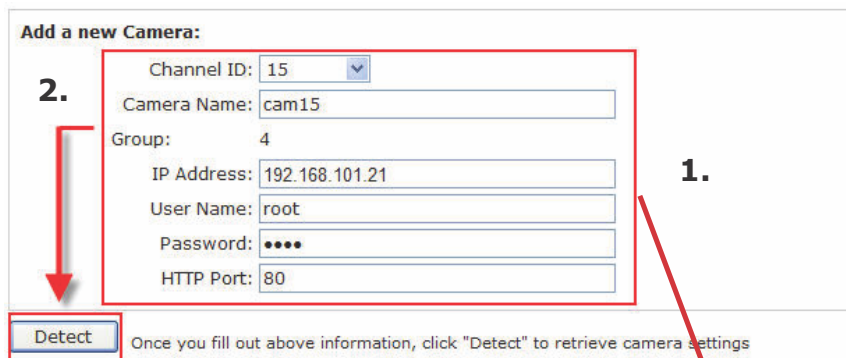
5. Click on "Detect" to establish connection between the recorder and the camera. If connection establishes successfully, camera's detailed information should be polled and displayed as below



6. Adjust its video format, frame rate, resolution or bitrate...etc if you wish and then click "Add" to finish adding the camera

Add a camera manually

Simply follow the instruction described above but instead of using the "Search" function, enter the camera's IP address and credential in the "Camera Information" manually, then follow step 5 ~6 described above.



Enter manually

4 Channel Network Video Recorder

Recording Configurations

The "recording configurations" gives users the overall control of how and when a recording is performed and the quality of different types of recordings performed on each channels. It can help the recorder to operate with sufficient system resource by performing recording only when it's necessary with adjustable recording frame rate.

You can define the following in "General Settings":

- Pre-Alarm/Post-Alarm recording length
- Recording frame rate
- Enable/disable different recording types on different cameras
- Enable/disable audio recording

Network Video Recorder

English
MAIN VIEW | Setup | SUBMENU RECORDING
System Time: October 28, 2009 12:03:28
User: admin

Setup

- 1. System Configurations
- 2. Channel Configurations
- 3. Event Configurations
- 4. Recording Configurations
 - General Settings
 - Schedule Settings
- 5. System Options

Recording General Setting

Recording Buffer

Pre-alarm Buffer: 0 sec
Post-alarm Buffer: 5 sec

Recording Frame Rate

	1	2	3	4	5	6	7	8	9	10	11	12	13	14	15	16
Continuous	1	1 Only	1	1 Only	1											
Schedule	2	1 Only	2	1 Only	2											
Event	Full	Full	Full	Full	Full											
Manual	Full	Full	Full	Full	Full											

Recycling

☐ Enable Recycle

Camera Recording Setting

	1	2	3	4	5	6	7	8	9	10	11	12	13	14	15	16
Continuous	<input type="checkbox"/>	<input type="checkbox"/>	<input type="checkbox"/>	<input type="checkbox"/>	<input type="checkbox"/>											
Schedule	<input type="checkbox"/>	<input type="checkbox"/>	<input type="checkbox"/>	<input type="checkbox"/>	<input type="checkbox"/>											
Event	<input type="checkbox"/>	<input type="checkbox"/>	<input type="checkbox"/>	<input type="checkbox"/>	<input type="checkbox"/>											

Apply Cancel

Recording Buffer

▼

Recording Frame Rate

[illegible]

Camera Recording Setting

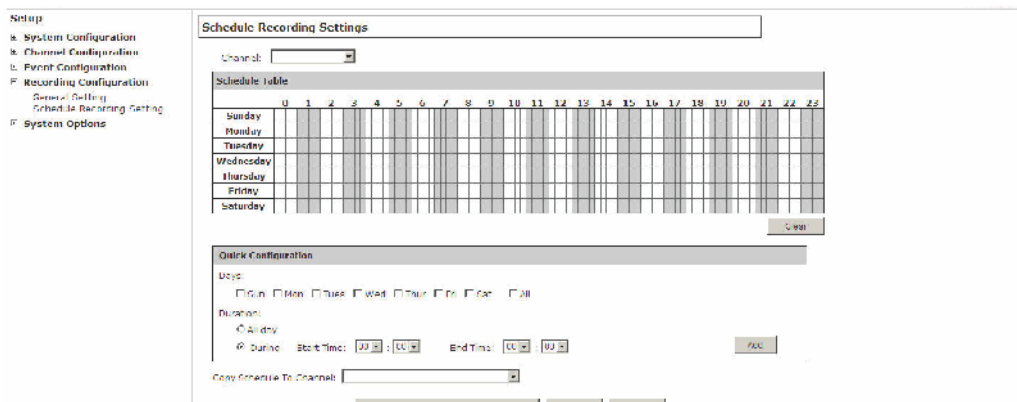
[illegible]

Record Audio

[illegible]

Schedule Recording

Here you can define the time range of the schedule recording for all channels.



Schedule Recording Settings

Channel:

Schedule Table

	0	1	2	3	4	5	6	7	8	9	10	11	12	13	14	15	16	17	18	19	20	21	22	23
Sunday																								
Monday																								
Tuesday																								
Wednesday																								
Thursday																								
Friday																								
Saturday																								

Quick Configuration

Days: ☐ Sun ☐ Mon ☐ Tues ☐ Wed ☐ Thurs ☐ Fri ☐ Sat ☐ All

Duration: ☐ All day ☐ During Start Time: : End Time: :

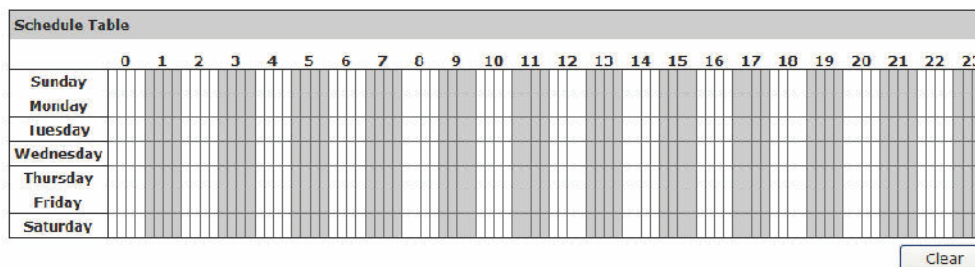
Copy Schedule To Channel:

To configure a schedule recording:

1. Use the "Channel" drop-down menu and select a camera first

Camera:

2. You can use the schedule table to set the time range. Click the cell boxes then move horizontally lets you set what hours to perform recording during a day. Click and move vertically lets you set what days to perform recording at a specific time.



Schedule Table

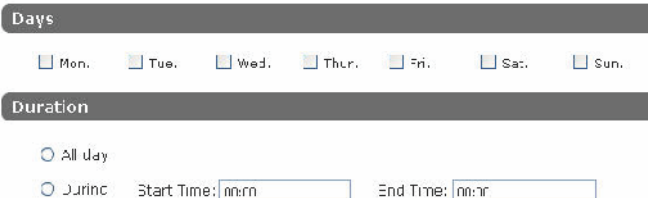
	0	1	2	3	4	5	6	7	8	9	10	11	12	13	14	15	16	17	18	19	20	21	22	23
Sunday																								
Monday																								
Tuesday																								
Wednesday																								
Thursday																								
Friday																								
Saturday																								

Clear

* Each cell box represents 15 minutes of time. Click one or more boxes to omit consecutive recording

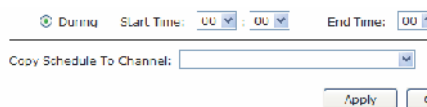
3. You can also use the “Quick Configuration” to define recording time range instead of clicking cell boxes one by one on the time table. Simply check what days you would like to perform recording and specify the recording duration by either choosing “All Day” or enter a start and end time for specific recording duration.

Quick Configuration



The screenshot shows the 'Quick Configuration' window. It has two main sections: 'Days' and 'Duration'. The 'Days' section contains a row of checkboxes for 'Mon.', 'Tue.', 'Wed.', 'Thur.', 'Fri.', 'Sat.', and 'Sun.'. The 'Duration' section has two radio buttons: 'All day' and 'During'. The 'During' radio button is selected, and next to it are two input fields for 'Start Time' and 'End Time', both containing the text 'nn:nn'.

4. Select the “Copy to” option if you would like to set the same recording schedule to another camera.



The screenshot shows the 'Copy Schedule To Channel' interface. It features a 'During' radio button, a 'Start Time' field with a dropdown arrow, an 'End Time' field with a dropdown arrow, and a 'Copy Schedule To Channel:' label followed by a dropdown menu. At the bottom right, there is an 'Apply' button and a small square button.